



# July 2020

Whakaoriori Kāhui Ako

Today ◀ ▶ February 2021 Week Month Agenda ▾

Sun	Mon	Tue	Wed	Thu	Fri	Sat
31	Feb 1	2	3	4	5	6
7	8	9	10	11	12 11:30am Ste	13
14	15	16	17	18	19	20
21	22	23	24	25	26	27
28	Mar 1	2	3	4	5	6

+ GoogleCalendar

*“Ko te manu e kai ana i te miro nōnā te ngahere,*

*Ēngari ko te manu e kai ana i te mātauranga nōnā te ao”*

*The one who partakes of the flora and fauna, that will be their domain.*

*The one who engages in education, opportunities are boundless.*



## Janine Devenport

- Lead Principal

[janine.devenport@fernridge.school.nz](mailto:janine.devenport@fernridge.school.nz)

Kia Ora Tatou,

Hasn't it been great to be back at school! Lockdown has made us appreciate a number of things and for many of us, it has been the face to face interaction with our colleagues and students. That social connection is a key part of school and both teachers and students value this highly.

Lockdown highlighted a number of things both positive and negative - the inequities around technology and the support of learning at home were two that I can think of.

We do, however, have some students who did really well during lockdown and many surprised us by taking the agency and opportunity to be successful in that environment. Just goes to show that sometimes we underestimate our students. Should we though, think about providing some opportunities for them to manage their own timetables and work schedules, like they did during lockdown, while at school. Maybe a hybrid curriculum design? I know that many of your schools and centres have been reflecting and reviewing things post COVID and working out what you are going to keep doing, stop doing and start doing. Lets not let this opportunity pass and just go back to what were doing before.

I have managed to collate a number of readings and have added these to the padlet. [Check them out.](#)

The Across School Leaders and I have been working on a number of things.

1. We have worked with Cathie Johnston from NZCER around the results from the wellbeing@school survey from last year. The Kāhui Ako results have been shared with the Within School Leads and now have the job to analyse these against their individual school results. We plan to complete this survey again next term and believe that the information gained will be essential to the development of our Social and Emotional Curriculums.
2. The Student Led Inquiry schools - 10 of them are continuing to march ahead with their work. I am really excited to see this work carry on whether it be via Zoom or through face to face meetings.
3. The Transitions workstream are working with the Learning Support Coordinators to push this work further - watch this space for more information
4. PLD - we have offered some initial zoom sessions during Level 3 in Digital tools, NCEA and what next, Engagement of students via distance learning and Learning through play via distance. These have kicked off a review of the PLD plan for the rest of the year. We have sent out a survey to get feedback from you about what you want or need and from this survey we will review our PLD plan and offer both options of a curriculum or specific focus and an opportunity to connect around similar year levels or curriculum focus.

Lastly, I will repeat some messages from my previous newsletter - you are all amazing and you have pivoted and provided your learning programmes in a completely different way so quickly. Well done for doing this during challenging times - the young people of our community are very lucky to have you.

Nga mihi nui

Janine

Lauren

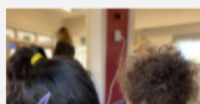
▪ NCEA



## Spotlight On: Cole Street Early Learning Centre

Cole Street Early Learning Centre provides an environment where children and their families feel a sense of closeness and connection in a whānau like setting, a mixed aged centre licenced for 24. Routines are unhurried, responsive and flexible to meet children's needs. Kaiako make the most of these times to encourage independence, enjoy great conversations, and foster children's leadership skills. Siblings enjoy being with each other and this supports these leaderships skills in the family type setting. Tamariki and their Kaiako spend a lot of time exploring their wider community with walks and van trips.

As a team, Cole Street ELC have been working towards extending their knowledge and understanding on the 'Agentic Child'. Along with agency, the team are currently working on their connections with the schools around them to support tamariki in their transition to school journey. Kaiako believe in fostering relationships with all whom are currently and soon to be in





tamariki's lives, empowering them to have the confidence and capabilities they need before moving onto school. Post-COVID, Cole Street educators are still working passionately with whānau and tamariki on individual and group interests that encompass the values of respect for themselves, their peers and the environment. The Cole Street team have been so proud and impressed with children's resilience during these unique and trying times.



Should you wish to know more about Cole Street ELC for you or someone you know, feel free to check out their website <http://www.colestreet.co.nz/> or contact the team on [colestreet@wise.net.nz](mailto:colestreet@wise.net.nz)

# Upcoming Events



## Whakaoriori Kāhui Ako Arts Extravaganza/Whakaaturanga

Fashion, Kapa Haka, Wearable Art, Shakespeare, Rock Bands

Wednesday 2<sup>nd</sup> December 6.30 – 9.30

Copthorne Hotel, Solway, Masterton

Help us celebrate the range of talent in the arts across our Kāhui Ako. More information to follow:

# Check This Out!

## Join us on facebook

Check out our facebook page to foster connections, see our Kāhui Ako in action, PLD opportunities offered by ourselves and others (locally and virtually), and more.



Find us here ----> <https://www.facebook.com/whakaoriori/>

## Whakaoriori Kāhui Ako - PLD Workplan

We have created many PLD opportunities in line with our work streams.

Click on the link and keep an eye out for information about how to register!

Please email Janine Devenport, your WSL or ASL for the link to book.

All contact details are on the "Our People" page.

# Whakaoriori in Action!