

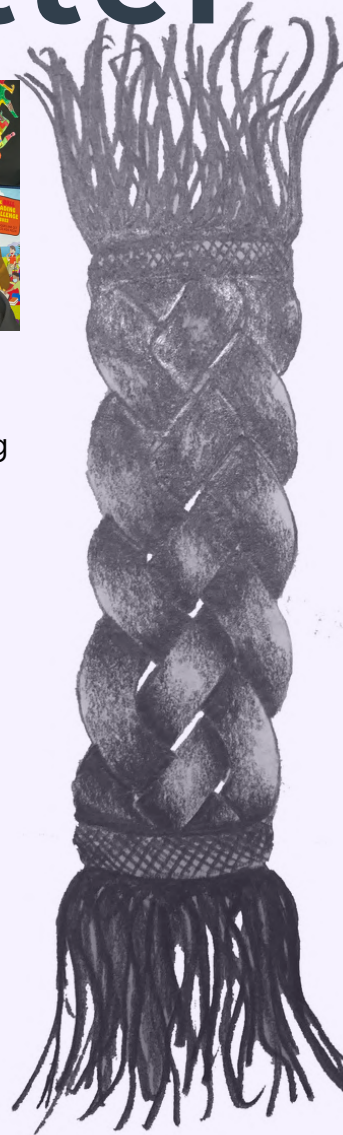
WHAKAORIORI KĀHUI AKO



Panui/Newsletter

LEAD UPDATE:

Janine Devenport
Darren Kerr



Kia Ora Koutou,

It is fantastic to be able to share with you all the mahi that we have been doing lately. This newsletter is going to update you on the workstreams but also highlight the range of ways that Matariki was celebrated in Whakaoriori.

It is with sadness that I announce that Aroha Pirere has resigned from her position as Across School Lead to be Assistant Principal at Wairarapa College.

Wairarapa College now has two ex Across School Leads working in their kura with Courtney Olson also teaching there now. This is a loss to our Kāhui Ako but we know that they will continue to promote and support our mahi. If you know of anyone that might be interested in applying for the vacant Across School Lead role then please watch out for the vacancy that will be advertised early next term.

We have been working hard on reviewing and realigning our Achievement Challenge and this is exciting. Watch this space for more details soon.

Nga mihi mahana,

Janine

It has been great seeing all the work happening across our Kāhui Ako over the term. It has been important to get feedback around the work we are doing, our new vision, the work streams and the mahi being completed. I want to say thanks so much for all the help from all of you who have contributed to this as it has given us the chance to review the work that has been completed and guide us in our upcoming work. It is halfway through the year and I hope you all make sure you find the time to take a break and be with whānau in the upcoming no contact time.

Mihi ki te katoa

Darren



Navigate
Whakatere



Cultivate
Whakatupu



Educate
Whakaako



Curate
Whakaheere

July 2022

He whānau ako tātou 2022

On June 17, all Whakaoriori Primary School teaching and support staff had the opportunity to learn together. This was the second cluster day for the sector and although COVID restrictions had hampered this many times, the day was a great success.

The day had a theme of local storytelling and how this can be utilised in our schools.

The day started off with a heartwarming mihi whakatau from the students of Masterton Intermediate School.

This set the tone for a wonderful day of learning.

To kick start off the learning, Janelle Riki-Waaka spoke about our responsibility to the profession of education and how important our impact as teachers is on our young people.

Following this, there was a range of workshop options to choose from. Dr Sarah Aiono - using Learning Stories to record learning through play. Joseph Potangaroa - Local stories from Wairarapa. Craig Render and Arnika McPhail lead us through the digital storytelling realm with reference to matauranga.com and Janelle Riki-Waaka about honouring Te Tiriti o Waitangi.

The day was closed with Dr Sarah Aiono speaking about School Stories and she brought our attention to the fact that for some school is not the story that is happy. She again highlighted the fact that our role as educators is about building and maintaining positive relationships with our students so that they are engaged and connected in their learning at school.



Navigate
Whakatere



Cultivate
Whakatupu



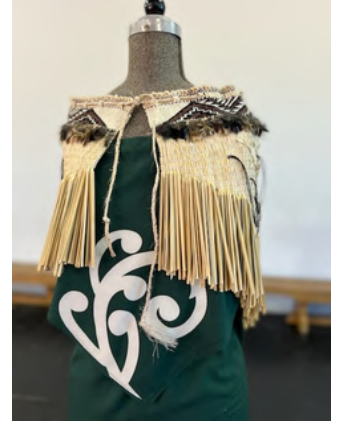
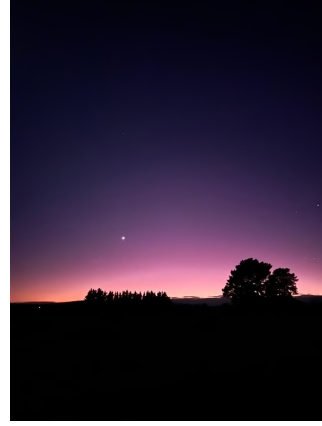
Curate
Whakaheere



Educate
Whakaako

Matariki 2022

"Mānawatia a Matariki"



Navigate
Whakatere



Cultivate
Whakatupu



Curate
Whakaheere



Educate
Whakaako

Matariki 2022



Navigate
Whakatere



Cultivate
Whakatupu



Curate
Whakahaere



Educate
Whakaako

July 2022

ECE Matariki 2022



Navigate
Whakatere



Cultivate
Whakatupu



Curate
Whakaheere



Educate
Whakaako

Better Together: Transition to School Hui

In June, Manaia Kindergarten and Masterton Primary School hosted a transition meeting for teachers and leaders from early childhood and new entrants. These meetings are about the reciprocal relationships between those working in the progression to school space, developing and building connections, and cultivating a positive impact for tamariki as they head on the next stage of their learning journey.

Teachers and a number of Learning Support Coordinators explored both the kindergarten space and new entrants classrooms. At Manaia, we explored a calm space created in response to the calm classroom PLD undertaken with MoE, and to support the needs of tamariki. This supports tamariki as they learn to understand their feelings and regulate their emotions alongside their teachers, and in their own space and time. There was also interest shown in the 'We are going to school' pukapuka to support tamariki as they begin to familiarize themselves to what their school might look like, and chat to their teachers about this.

The new entrants space at Masterton Primary School is conveniently located closest to the kindergarten to optimize opportunities for tamariki at the kindergarten to see the teachers they one day may have. Those in the new entrants rooms are shown where resources go by photos of the resources being placed on their respective shelves, fostered opportunities for tuakana teina through facilitated resources, and more.

During the evening, Evan Jones (Across School Lead) talked about the vision for our Whakaoriori Kāhui Ako being updated in time and aligned to the voice of our youth and community, Tash McQueen (RTLB) spoke briefly about the progression to school form to be produced alongside those in the ECE – School space. This will support schools as they continue to be ready for tamariki. We look forward to working with our early childhood and new entrants community in the curation of this.

Thank you to Manaia Kindergarten and Masterton Primary School for hosting. A great evening of connections, gems, and food for thought as we explore progression to school for all our ākonga.



Tumuaki Liaison Ideas

Thanks so much for the feedback and ideas around how you meet and discuss the work in the Kāhui Ako that you complete with you ASL/WSL teams. This list has been attached to this newsletter with these great ideas and something for you to think about how you might like to liase more effectively in the future. Please have a look through this attachment and look at what you currently do and consider some of these ideas so that you are connected to the amazing mahi your ASL/ WSLs are doing within our workspace.

WITH OUR ASL

- Weekly catchup meetings
- Updates through staff presentations in staff meetings
- Senior management team meetings where ASL presents work being done
- ASL meets/ organises meeting with tumuaki and WSL to share
- ASL came to beginning year meeting to share work for the year/ introductions
- Meets with DP who then shares back to staff
- Present to the BOT with workstreams

WITH OUR WSL

- Updates through staff presentations in staff hui
- WSL attends Senior Management team meetings
- Weekly/ Fortnightly meeting with tumuaki to share work
- Defined area of responsibility/project for WSL to show work being done
- WSL led staff meeting 2-3 times a term to share
- WSL leads PD meetings for staff at different times across the year
- Teachers in lead groups with different focuses. Based on Kāhui ako goals – WSL leads this work

Steering Group with Di Drake

An important part of our mahi is liaising with our Ministry Kāhui Ako Liaison. Di Drake has been an advocate and kaitiaki for our mahi throughout the time. It is always great to share with Di and the Steering group about the mahi that we are doing.

We spoke with Di about our review of our Achievement Challenge and the alignment with the Vision Refresh, our traction in workstreams and what is planned for the rest of 2022.



Term 2 WSL Hui

This term's extended WSL meeting had a couple of fabulous guest speakers. After being inspired at a recent forum day, we invited Chris Wilton from Horowhenua Kāhui Ako to share his korero at our WSL meeting. He spoke about the importance of understanding why we do karakia. This was an important reminder for us to take time and do things with intention, not just as a box ticking exercise. We also got to spend time thinking about mauri. We loved Chris' energy and we hope there are more opportunities to collaborate with other kāhui in the future. This dovetailed nicely with Janelle Riki-Waaka's presentation unpacking important concepts and kupu. It added a whole new level of understanding to some of the concepts we use all the time such as manaakitanga and whakawhanaungatanga.

We are so lucky to have great speakers come and present to us and grow our understanding. Hopefully these ideas are coming back from WSLs and filtering back into schools.



Aotearoa Histories

The Whakaoriori, South Wairarapa, and Tararua Kāhui Ako are collaborating to develop a curriculum map on the Aotearoa New Zealand Histories Curriculum. We aim to support communication as we work together to implement a progressive curriculum for our ākonga, unique to our rohe. To put it simply: have you any ideas of who is doing what, when and how?!

We'd love to hear what your kura is thinking of doing from 2023 as we begin our journey with this Curriculum. Your input is valued, so look out for an email arriving soon.

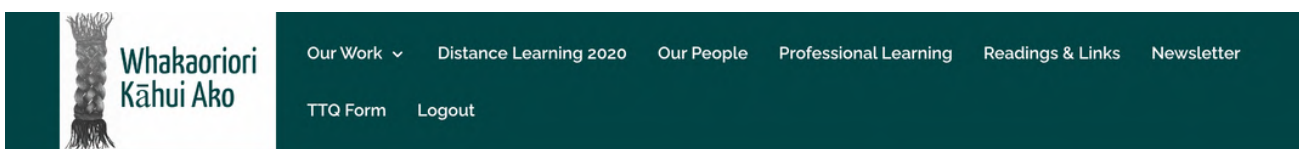


Transition Form

Last year with your help we developed the WKA school transition document. This document has had some reworking and is ready for the 2022-2023 transitions. It is now live on our website and will be available all year. The username and passwords remain the same as last year. If you need support with accessing, resetting or forgotten passwords – please direct queries to Evan Jones evan.jones@trinityschools.nz

Please read the informed consent information at the beginning of the document. A successful transition is achieved when whānau are an integral part of the transition.

New entrant teachers are being surveyed by RTLB for a proposed ECE to primary school transition form. RTLB and WKA are keen to find out what information is ideally required by new entrant teachers. ECE teachers will also be surveyed and consulted on practical matters concerning the application of the form. We hope to have a working example available for feedback by the end of Term 3.



Private: Teacher Transition Questionnaire

Teacher Transition Questionnaire

Please note that your information is saved on our server as you enter it.

Please [read the instructions here](#) regarding obtaining informed consent and the completion of this form.

Informed Consent *(Required)*

Informed consent has been obtained



Navigate
Whakatere



Cultivate
Whakatupu



Curate
Whakahaere



Educate
Whakaako

As we weave our raranga, we ensure the work we do is about what we can do together rather than all working individually. It's about building capacity and collaboration across education and our community, authentic engagement, mana acknowledging conversations, being agile and responsive, transformational rather than transactional, and building collective intelligence.

Together we will:

Navigate: research and investigate.

Cultivate: build capacity in educators and grow good practice.

Curate: gather and present resources to the Kāhui, Manaaki our GEMS!

Educate: measure and assess impact.

Meeting Dates 2022

Whakaoriori Kāhui Ako 2022

Hui Dates

Term	Kaitiaki Group (leaders)	WSL	ASL	AP / DP	PLD Opportunities and events
ONE	24 February 3.30 pm	3 March 3.30 pm	Every Thursday morning 9-11am	17 March 3.30pm	Combined Primary TOD 14th April ECE/New Entrants Transition Meeting Wednesday 9th March @ DPS 4.30pm
	24 March 3.30 pm	7 April 1 - 4 pm			
TWO	26 May 3.30pm	12 May 3.30 pm	Every Thursday morning 9-11am	2 June 3.30pm	ECE/New Entrants Transition Meeting, Wednesday 1st June @ Manaia Kindergarten 4.30pm
	30 June 3.30 pm	16 June 1-4pm			
THREE	25 August 3.30pm	4 August 3.30pm	Every Thursday morning 9-11am	15 September combined with WSL 3-4 pm	ECE/New Entrants Transition Meeting TBC
	29 September 3.30pm	15 September 1-4 pm			
FOUR	27 October 3.30pm	3 November 3.30pm	Every Thursday morning 9-11am	10 November 3.30pm	ECE/New Entrants Transition Meeting TBC
	24 November 3.30pm	1 December 1-4 pm			

Venues if not stated to be confirmed.